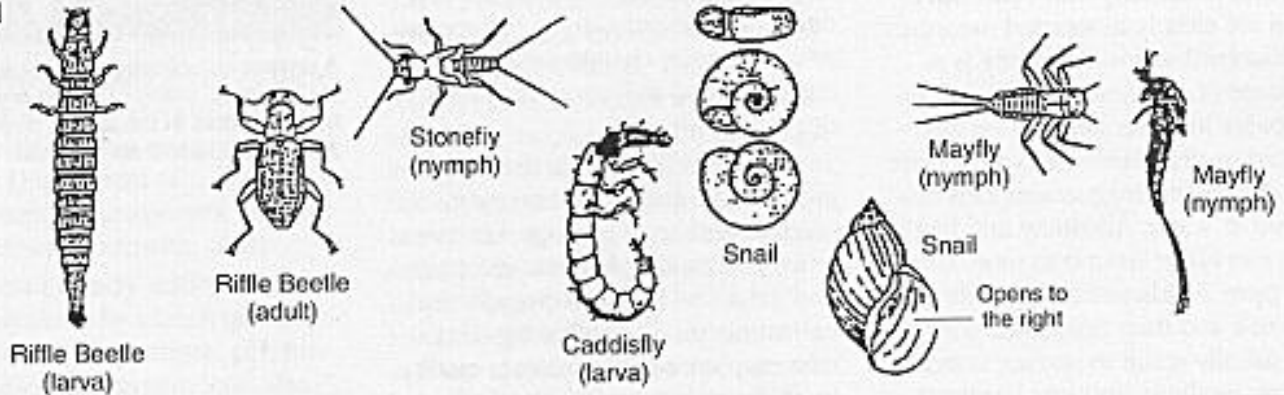
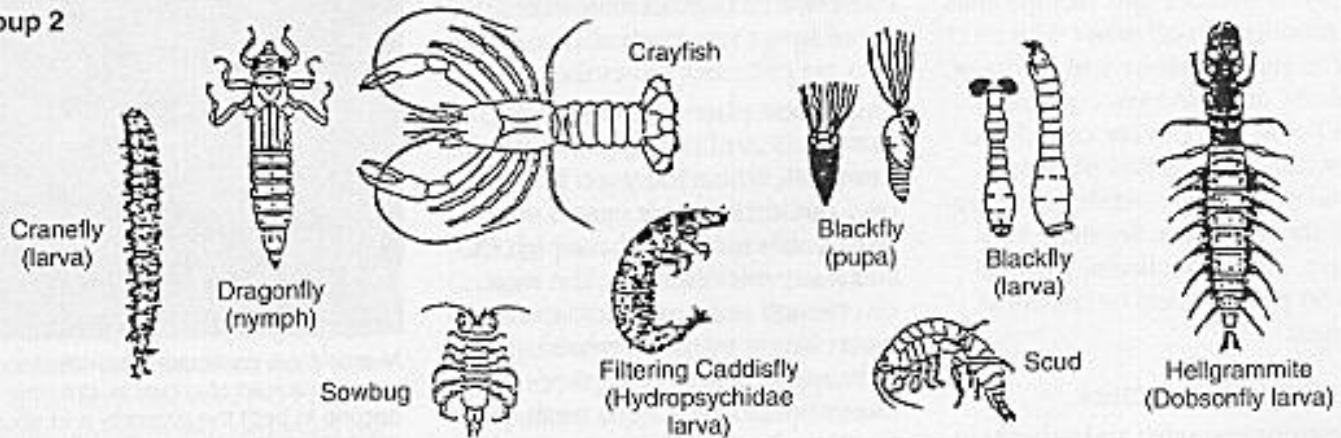


Group 1



Group 2



Group 3

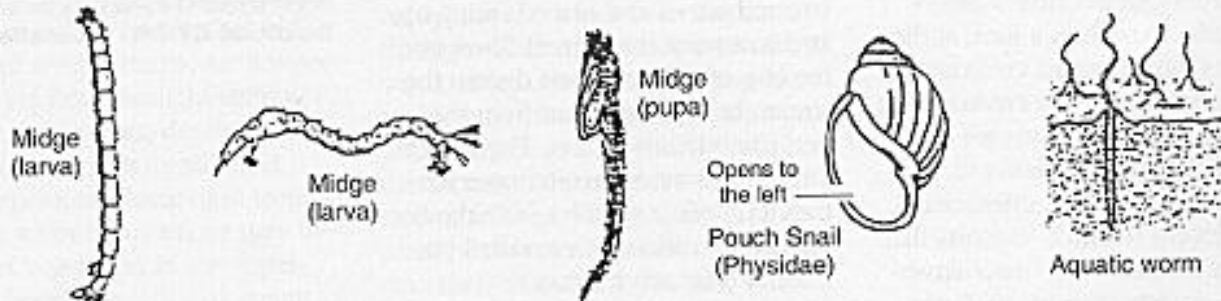


Figure 5. Macroinvertebrate groups picture key. **Group 1** organisms are generally pollution intolerant. Their dominance generally signifies excellent to good water quality. **Group 2** organisms exist in a wide range of water quality conditions. **Group 3** organisms are generally tolerant of pollution. Their dominance usually signifies fair to poor water quality. Courtesy Bio-Assess, Auburn University.