

Stream Insects and Crustaceans ID Card

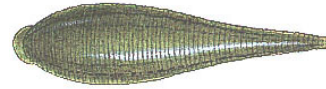
Lines under picture indicate the relative size of organisms



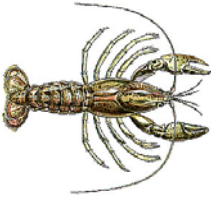
Aquatic Worm:
Class Oligochaeta
 $\frac{1}{4}$ " - 2", can be very tiny;
thin, wormlike body, tolerant of
impairment



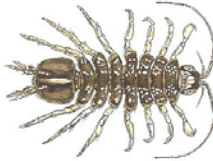
Flat Worm:
Family Planaridae
Up to $\frac{1}{4}$ ", soft body,
may have distinct head with
eyespots, tolerant of impairment



Leech:
Order Hirudinea
 $\frac{1}{4}$ " - 2", segmented body,
suction cups on both ends,
tolerant of impairment



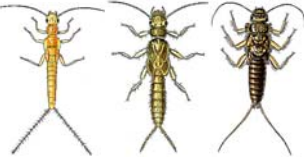
Crayfish: Order Decapoda
Up to 6", 2 large claws, 8 legs, resembles
a small lobster, somewhat tolerant of
impairment



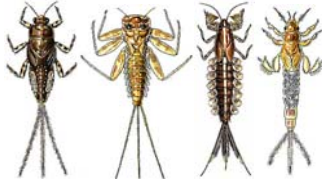
Sowbug: Order Isopoda
 $\frac{1}{4}$ " - $\frac{3}{4}$ ", gray oblong body wider
than it is high, more than 6
legs, long antennae, somewhat
tolerant of impairment



Scud: Order Amphipoda
 $\frac{1}{4}$ ", white to gray, body
higher than it is wide,
swims sideways, more than
6 legs, resembles small
shrimp, somewhat tolerant
of impairment



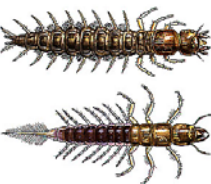
Stonefly: Order Plecoptera
 $\frac{1}{2}$ " - 1 $\frac{1}{2}$ ", 6 legs with hooked
tips, antennae, 2 hair-like tails,
no gills on abdomen, very
intolerant of impairment



Mayfly:
Order Ephemeroptera
 $\frac{1}{4}$ " - 1", plate-like or feathery gills
on abdomen, 6 hooked legs, 2 or 3
long hair-like tails, tails may be
webbed together, very intolerant
of impairment



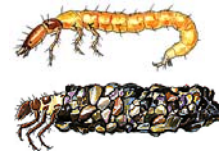
Dragonfly and Damselfly:
Order Odonata
 $\frac{1}{2}$ " - 2", large eyes, 6 hooked legs,
large protracting lower jaw, 3
broad oar-shaped tails OR wide
oval to round abdomen, somewhat
tolerant of impairment



Hellgrammite, Fishfly, and Alderfly:
Order Megaloptera
 $\frac{3}{4}$ " - 4", 6 legs, large pinching jaws, 8
pairs of feelers along abdomen, 2 hooks
on tail end OR 1 single spiky tail,
somewhat tolerant of impairment



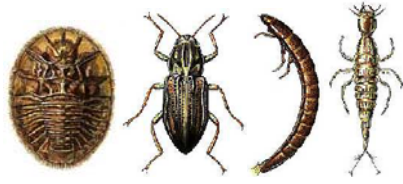
Common Netspinners:
Family Hydropsychidae
Up to $\frac{3}{4}$ ", 6 hooked legs on
upper 1/3 of body, 2 hooks at
back end, underside of
abdomen with white tufts of
gills, somewhat tolerant of
impairment




Most Caddisfly:
Order Trichoptera
Up to 1", 6 hooked legs on
upper 1/3 of body, may be in
stick, rock or leaf case, no
gill tufts on abdomen,
intolerant of impairment

Stream Insects and Crustaceans ID Card


Lines under picture indicate the relative size of organisms



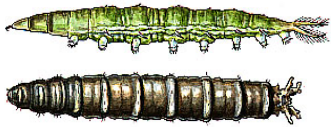
Beetles: Order Coleoptera
 $\frac{1}{4}$ " - 1", disk-like oval body with 6 small legs and gill tufts on underside OR small black beetle crawling on streambed OR comma-like brown "crunchy" body with 6 legs on upper 1/3 and possibly gill tuft on back end, OR (miscellaneous body form - rare), somewhat tolerant of impairment




Midges:
Family Chironomidae
 Up to $\frac{1}{4}$ ", distinct head, worm-like segmented body, 2 leg-like projections on each side, often whitish to clear, occasionally bright red, tolerant of impairment




Black Fly: Family Simuliidae
 Up to $\frac{1}{4}$ ", end of body wider (like bowling pin), distinctive head, sucker on end, tolerant of impairment



Most True Flies:
Order Diptera
 $\frac{1}{4}$ " - 2", bodies plump and maggot-like, may have caterpillar like "legs" along body, may have lobes or conical tails on end, tolerant of impairment



Gilled Snails:
Class Gastropoda
 Up to $\frac{3}{4}$ ", shell opening covered by a thin plate called an operculum, with helix pointed up shell opens to the right, intolerant of impairment

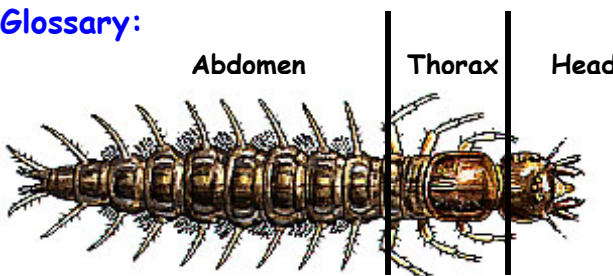


Lunged Snails:
Class Gastropoda
 Up to $\frac{3}{4}$ ", no operculum, with helix pointed up shell opens to the left, tolerant of impairment




Clams:
Class Bivalvia
 Up to $\frac{3}{4}$ ", fleshy body enclosed between two clamped together shells (if clam is alive, shells cannot be pried apart without harming clam), somewhat tolerant of impairment

Glossary:



Tails: There are many different kinds of macroinvertebrate tails. The thin thread-like tails found on stoneflies and mayflies are called cerci. The oar-shaped tails found on a damselfly are not really tails - they are actually gills called caudal lamellae!



VA Save Our Streams Program
 VA Division of the Izaak Walton League of America
 P.O. Box 8297
 Richmond, VA 23226
 (804) 615-5036 www.vasos.org

These sheets are modified from the National Izaak Walton League of America SOS Program Stream Insects & Crustaceans ID Card.
<http://www.iwla.org/SOS/index.html>